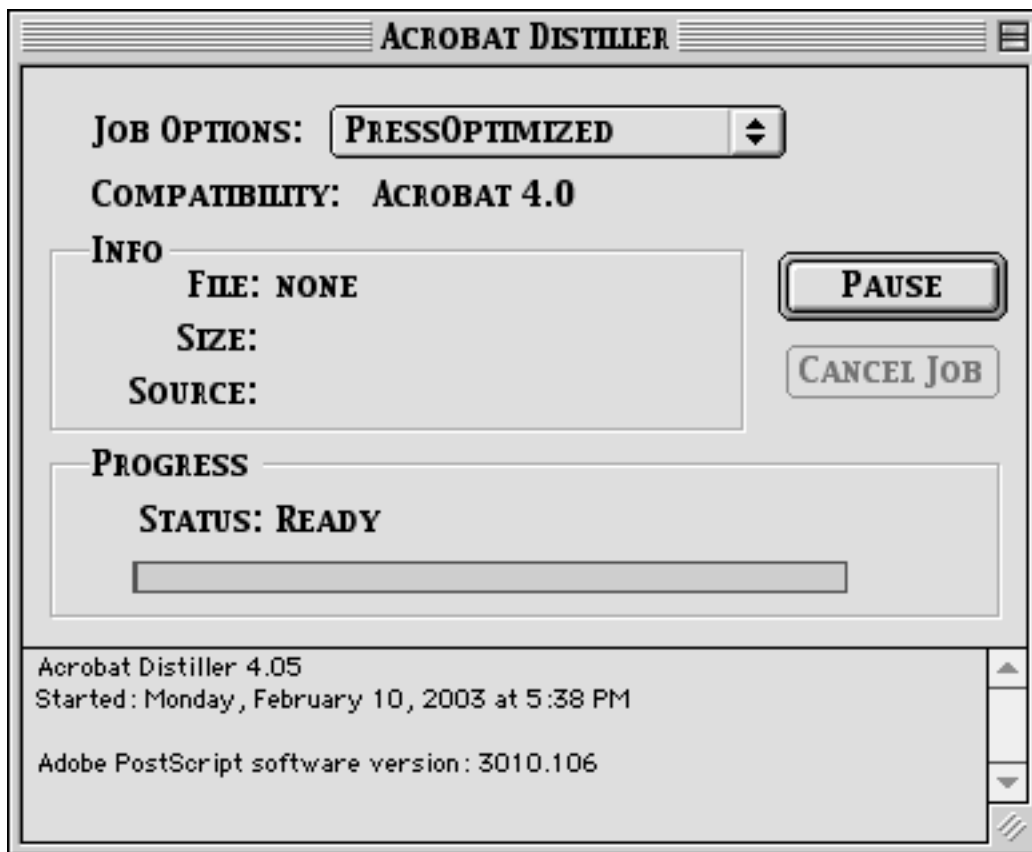


Generating Press Optimized PDF Files

Basic Rules to remember:

1. Use Acrobat Distiller or like products (Agfa Create) to create your PDF files. "Do not use PDF Writer". Write your PostScript files utilizing the print to file selection in your print dialog box. Then drag the file into distiller info box to generate the PDF.
2. Make sure all of your embedded graphics are CMYK, Spot or monochrome (black and white). Graphics in RGB, Cielab or Lab colorspace will not separate properly to a cmyk device.
3. Embed all of your fonts. If the font is an Adobe type one font you must be sure both the screen and printer font are active in your font manager. Generate font outlines if the page layout or illustration software package has the ability to create them.
4. Make sure to disable any color management. Files with embedded ICC profiles may print correct to a color injet or laser printer. But when coupled with the natural press gain of a printing press, the expected results may not be what's anticipated.

The following screen captures illustrate the default settings for press optimized PDF's.



After opening Distiller Select PressOptimized in you Job Options pull down.

Recommended Job options for Press optimized PDF's

JOB OPTIONS: PRESSOPTIMIZED

GENERAL | **COMPRESSION** | **FONTS** | **COLOR** | **ADVANCED**

FILE OPTIONS

COMPATIBILITY: **ACROBAT 4.0** ▾

ASCII FORMAT

OPTIMIZE PDF

GENERATE THUMBNAILS

RESOLUTION: **1000** DPI

BINDING: **LEFT** ▾

OK

CANCEL

SAVE AS...

JOB OPTIONS: PRESSOPTIMIZED

GENERAL | **COMPRESSION** | **FONTS** | **COLOR** | **ADVANCED**

COLOR BITMAP IMAGES

SUBSAMPLING AT **300** DPI

COMPRESSION: **AUTOMATIC** ▾

QUALITY: **MAXIMUM** ▾

GRAYSCALE BITMAP IMAGES

SUBSAMPLING AT **300** DPI

COMPRESSION: **AUTOMATIC** ▾

QUALITY: **MAXIMUM** ▾

MONOCHROME BITMAP IMAGES

SUBSAMPLING AT **1000** DPI

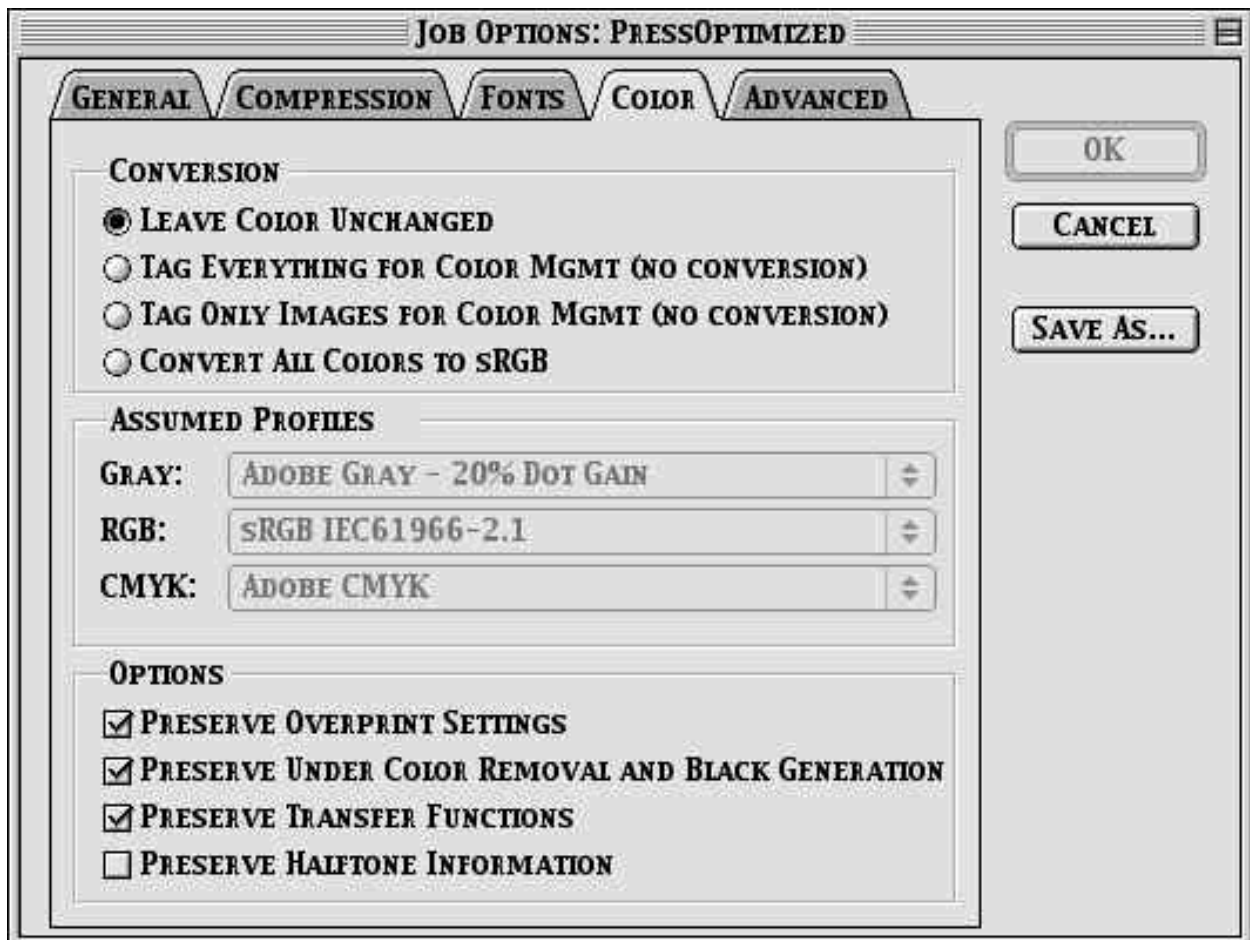
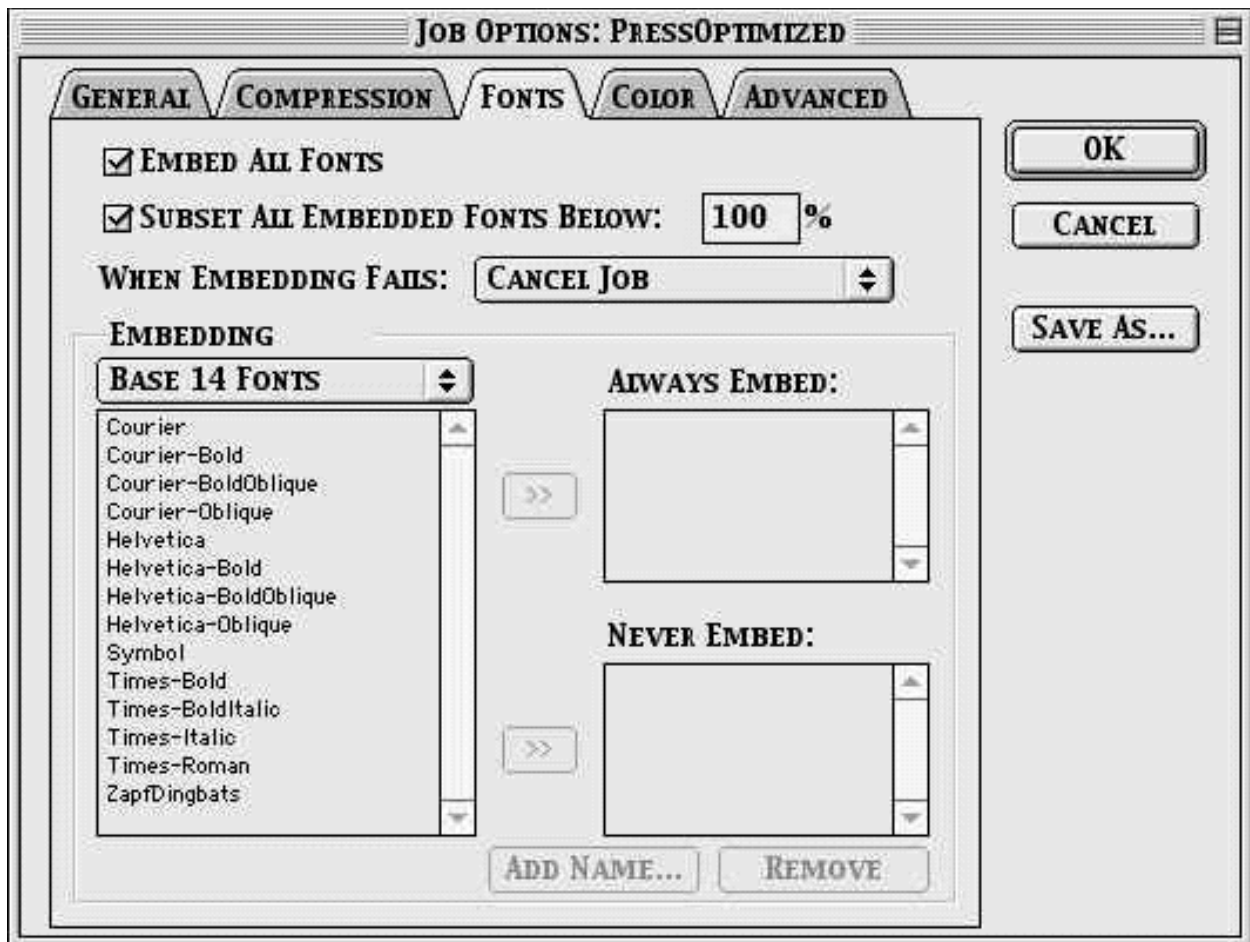
COMPRESSION: **CCITT GROUP 4** ▾

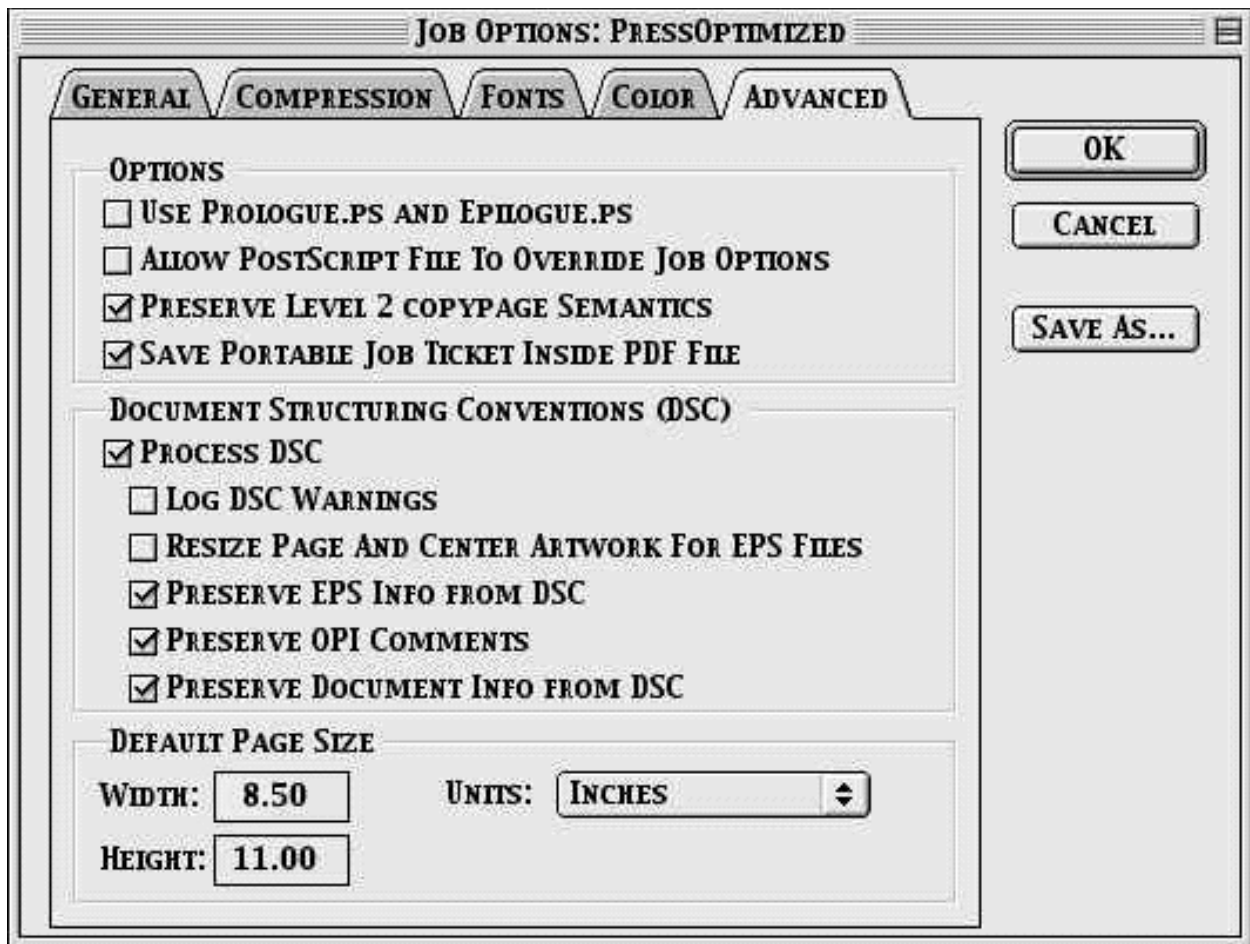
COMPRESS TEXT AND LINE ART

OK

CANCEL

SAVE AS...





If your job requires a bleed make sure to change your default page size to accommodate the bleed. Or to change your page size to match the job.

Tip: You can create several "PressOptimized" job options to accommodate several page sizes or compression schemes.